



Follow us on Twitter:

@RedfieldEdge @Deputy_RE @HollyClass_RE



@HazelClass_RE@PineClass_RE

@WillowClass_RE

@BeechClass_RE @MapleClass_RE



What's been happening?

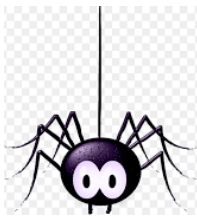
Cheddar Gorge

Willow had a great day on Friday on their trip to Cheddar. As promised, some photos below of their fantastic experience.



Charlotte's Web

On Tuesday afternoon the children in KS2 had the fantastic opportunity to watch a theatre production in our very own school hall. The production this year was 'Charlotte's Web', a tale about a spider who befriends a lonely pig, Wilbur. Wilbur is taken care of by a little girl called Fern and they develop a very special friendship.



The children thoroughly enjoyed the performance. They interacted well and were a great audience.

'It was very good and I enjoyed it a lot!' Stuart Y6

'It was emotional when Charlotte died but I liked it.' Oscar Y6

'I hope the theatre comes back again next year.' Stanley Y5

Willow Class Assembly

On Thursday, we had the first class assembly of the year and it was the turn of Willow Class.



The children shared their learning about the Stone Age through a play they had written in class. They spoke with confidence and enthusiasm and did their class teacher and parents proud.

Well done Hazel Class!

Word of the Week

Hazel	transform	heroic
Pine	command	jousting
Willow	impermeable	impractical
Beech	climate	classify
Maple	structure	isolation
Oak	inconceivable	ironic

Swimming

Swimming started this week for both Oak and Maple Class.

This is a reminder to all parents that both classes will need their swimming kit every **Wednesday** up until **14th November**.



Fun Fun Fun!

We thought the children might be disappointed about not being on the field so often now that the weather is beginning to turn. However, it seems we were wrong!



For your Information - Harvest Festival

We will be celebrating Harvest at school on **Tuesday 23rd October 2018** and we would like to invite you to join us.

KS2 Harvest assembly - 9.30am

KS1 Harvest assembly - 2.30pm

We will be collecting food donations on the day that will be passed onto Keynsham Food Bank.

(Please note we would like dry food and tins only)



Monetary donations collected after each assembly will be split between Julian House (homeless charity based in Bath) and Send a Cow which is an international charity supporting African communities.



Small Businesses - We Need You

This year, our Christmas fayre is going to look a little different. You will still be able to look around a **wide range of stalls / games** organised by Year 6 pupils, enjoy a variety of **refreshments** provided by the Friends and visit **Santa in the Elf Wrapping room** where your children can buy a gift for members of their family.

In addition, the Friends are inviting small businesses to rent a pitch in order to sell their products to our school families and local communities that join us.

MacMillan Cake Sale

Thank you to everybody who supported our cake sale last Friday.

We raised a fantastic **£197.49**



Bitton in Bloom



Our certificate arrived today!

It was great to hear that Redfield Edge came third in this year's Bitton in Bloom competition. Members of the parish council came into school in term 6 to judge the children's efforts in the school garden and surrounding area. **Well done** to all of the children that have contributed this year and well done and thank you to Mrs Sheppard for all of her efforts.



Friends Halloween Disco

Date Change - This is a reminder of the change of date for the Halloween disco now taking place on **THURSDAY 18th OCTOBER**



Christmas Trees

Every year we purchase Christmas trees for the main entrance and school hall.

If you wish to sponsor one of our trees in return for a mention in our newsletter/ website, please contact the school office to let us know.

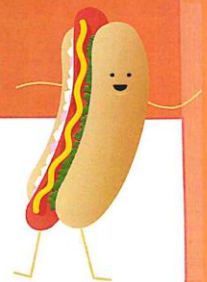


Dates for your Diary

DATE	EVENT
Mon 8 th Oct	Maple Class camp meeting @ 15.45
Wed 10 th Oct	Oak Class Swimming Maple Class Swimming
Thurs 11 th Oct	Beech Class assembly @ 10.20 Ukulele Lessons - Y5 School Football tournament at Mangotsfield (AWAY)
Fri 12 th Oct	Y2 Visit Warwick Castle
Mon 15 th - Wed 17 th Oct	Y5 camp at Kilve Court
Tues 16 th Oct	Friends AGM @ 19.00 hrs
Wed 17 th Oct	Governor Day 1 Individual and sibling photographs for all classes except Maple Class. Oak Class Swimming (Maple at camp)
Thurs 18 th Oct	Pine class assembly @ 10.20 Ukulele Lessons - Y5 Yr 6 author event at SBL
Mon 22 nd Oct	South Gloucestershire Council Road Safety Be Safe Be Seen assembly
Tues 23 rd Oct	Harvest Assembly KS2-am KS1-pm

Mrs Robinson

Bonfire Day



Jumbo hotdogs - "Sky Rockets"

Veggie hotdogs - "Big Bangs"

Homemade potato wedges - "Jumping Jacks"

Corn on the Cob - "Catherine Wheels"

Toffee Apple Muffins



Monday 5th November



integra.
schools

