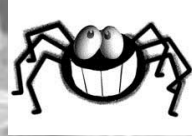




What are Pine Class learning in Term 5?



English:

Non-chronological report about mini-beasts

Rhyming poetry

Science:

Habitats

Animals - food chains and basic needs

Plants - identify plants in their habitat

Maths:

Calculation (written and mental)

+ - X ÷

Art/D.T.

Sketching - observational drawings of mini-beasts

Geography:

Habitats around the World
Climate

All
Creatures
Great and
Small

Computing:

Data handling
Creating charts
Branching databases

Music:

Zootime
Pulse, rhythm and pitch

D.T.

Designing and creating an animal habitat

R.E./P.S.H.E.

Staying calm under pressure

P.E.

Games
Yoga

KS1 SATs week

w/c 15th May